



# OMNIOLORE NEWS



Volume 23 Issue 2

www.omnilore.org

March 2014

### DON'T MISS – IN THIS ISSUE

<u>President's Message</u>	<u>Page 2</u>
<u>Computer Talks</u>	<u>Page 2</u>
<u>Profile: Leslie Schettler</u>	<u>Page 3</u>
<u>OLLI at CSUDH</u>	<u>Page 3</u>
<u>Dean's Corner</u>	<u>Page 4</u>
<u>Best Sellers SIG</u>	<u>Page 4</u>
<u>AED Training</u>	<u>Page 5</u>
<u>In Memoriam</u>	<u>Page 5</u>
<u>Movie Critic Corner</u>	<u>Page 6</u>
<u>Equipment Box</u>	<u>Page 6</u>
<u>The Bookshelf</u>	<u>Page 7</u>
<u>Forum Reservation Form</u>	<u>Page 7</u>
<u>Calendar</u>	<u>Page 8</u>
<u>About the Forum Luncheon</u>	<u>Page 8</u>



*Senator Ted W. Lieu*

## California High Speed Rail: Boon or Boondoggle?

*by Kate Nelson*

The Sierra Club and the Tea Party don't agree on much, but they both think that high speed rail in California is a very bad idea. Governor Jerry Brown and Senator Ted Lieu (D. Torrance) disagree. They are convinced that the project will bring jobs and opportunities to the state. Senator Lieu, who is running for U.S. Congressman Henry Waxman's seat, went on record in July, 2012: "If you still believe in the California dream, in our resources and our people, if you believe our best days are yet to come, you will vote for this."

No matter which side of the fence you are on, you should attend the **Omnilore Forum on Wednesday, April 30<sup>th</sup> at the Los Verdes County Club** to hear **Senator Ted Lieu talk about High Speed Rail in California**. The project is controversial, to say the least. Do we have the political will to build it? Can we afford it? Can we solve the compatibility issues? Will this project help or hurt the environment? Will this lead to smart growth or will it only benefit contractors with political pull? If we build it, will they come?

Every Californian would be impacted by this enormous project. Weigh in with our California senator who might possibly be representing us in Congress. Senator Lieu, who is a Stanford grad with a law degree from Georgetown, will talk about the history, current status, pros and cons of the issue; then he will open the floor to questions and discussion. Don't miss this important and timely Forum talk.

### Omnilore Spring Forum, Wednesday, April 30th

**- at 11:30 a.m. -**

**Where:** Los Verdes Country Club (near the top of Hawthorne Blvd)

**Menu:** Baby spinach salad, Chicken Marsala with mushrooms and wine sauce, grilled squash and zucchini, wild rice pilaf. Carrot cake for dessert. As always, the chef's choice vegetarian plate is also available, but must be ordered when you make your reservation.

**Register:** Use the form on page 7 of this newsletter OR wait for the flyer coming soon in your regular mail and send it, along with your **check for \$22**, to JoAnna Kerrigan who is handling the business end of this Forum while Lori Geittmann recovers from surgery.

You won't want to miss this one!

### BOARD OF DIRECTORS Elected Officers

President	Howard Korman
VP - Academics	Janet Brown
VP - Administration	Kathleen Fitzgerald
Treasurer	Jim Slattery
Recording Secretary	Art Irizarry
Past President	Bill Gargaro
Member-at-Large	Leslie Back
Member-at-Large	Kate Nelson
Member-at-Large	Gary Nofziger

### Standing Committee Chairs

Membership	Linda Jenson
Forum	Lori Geittmann
Communications	Mary Golob
Curriculum	Rick Spillane
Head Coordinator	Marilyn Brashear

### Appointees

New Member Liaison	Edith Garvey
Registrar	JoAnna Kerrigan
SDG Scheduling	Ruth & Hal Hart
Office Manager	Carol Johnson
Room Scheduling	Lynn Taber
Laptop Administrator	Rick Spillane
Equipment	Hal Hart
Supplies	Andrea Gargaro
Keys	Marilyn Landau
Webmaster	Hal Hart

OMNIOLORE NEWS is a publication of OMNIOLORE, a Learning-in-Retirement Organization, a program of the Osher Lifelong Learning Institute at the California State University Dominguez Hills.

OMNIOLORE NEWS is published six times annually. We welcome short feature articles and news stories. Please contact the editor with your contributions.

Editor	Mary Golob
Staff Member	Carol Kerster

## MESSAGE FROM THE PRESIDENT

by Howard Korman

The Omnilore fiscal year (November 1 to October 31) continues to move right along. The Omnilore News calendar shows a number of activities planned for the next two months, so check them out at the Omnilore website - [www.omnilore.org](http://www.omnilore.org).

The Winter Forum on January 30 was a meaningful one, featuring a lively discussion on Medicare fraud. The Forum Committee is planning another excellent one on Wednesday, April 30<sup>th</sup>. Check out the description on the front page of this newsletter.

By now, those of you who are going to attend study/discussion groups (S/DGs) this summer have already voted for the ones you wish to participate in, and I hope they made the final cut at a time when you are available. The array of subjects was interesting, as usual, and the Curriculum Committee, ably led by **Rick Spillane**, is to be congratulated once again. We hope that you specified back-ups in case your first choice did not get enough participants. It is important to know what is expected of Omniloreans during the S/DG formation and conduct of the classes. A pre-meeting is required and your attendance

is strongly encouraged. The class members decide specifics for the class, with the coordinator serving as a facilitator. Please be flexible, since the success of the class depends upon everyone contributing the appropriate effort for a positive outcome. Try to provide questions for presentation or text discussion two weeks prior to your session, or at least one week ahead. For your presentation, please do not just read a narrative -- and also allow plenty of time for discussion.

We continue to modernize the equipment for your presentations; there are new PCs in rooms 7 and 8 for your use.

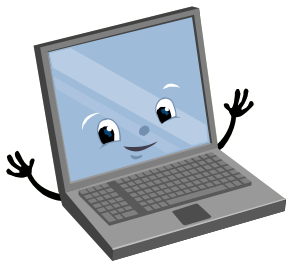
As I mentioned in January's newsletter, the time for instruction on the use of our Automatic External Defibrillator (AED), located in Room 7, is here again. We currently have 30 of our members trained, but the time for training renewal is in the spring of this year. New volunteers who did not participate in previous sessions are eligible for this training. **Gary Nofziger** will be coordinating this activity. We plan to train 30 members at no cost to those trained. We will hold two sessions: April 11<sup>th</sup> (Friday) and May 29<sup>th</sup> (Thursday). The

call for volunteers to take the training will go out soon. All of you are eligible, so please give it some serious thought. We hope we'll never need the AED,

but if we do, we'll also need to have trained members who know all the proper emergency procedures, including the use of the AED.

We all look forward to our March/April activities that you can review on our Omnilore website, which is well coordinated by our webmaster **Hal Hart** and his assistants. A few examples are: our continuing S/DGs, the Best Sellers Special Interest Group meeting on March 10<sup>th</sup> for *Thieves of Book Row* by Travis McDade, our Hiking/Walking Group that meets on the third Friday, the next Computer Talk on March 27<sup>th</sup>, and the April 30<sup>th</sup> Forum. Also, please tell prospective Omniloreans that we will be holding an "Introducing Omnilore" orientation on March 24<sup>th</sup>.

So, enjoy the upcoming transition from winter to spring and all the related activities.



## Computer Talks

March 27th - Noon to 1:00 - Room 7

### Use of PowerPoint for Presentations

Presented by Rick Spillane

This Computer Talk will be focusing on everything you need to know and were afraid to ask to successfully use PowerPoint on both Macs and PCs.

**Rick Spillane** will start at the very beginning: creating a presentation. We will first create an outline of a talk in PowerPoint, and then build and organize slides with your discussion points. We'll briefly look at customizing your presentation by adding notes to any slide and working with the slide master to set a style for the presentation. We will cover how to use PowerPoint to aid in your presentation and how not to confuse or put people to sleep. We will end by showing how to save the presentation on a flash drive to move it from your computer to the Omnilore classroom computer.



April 24th - Noon to 1:00 - Room 7

### Using PowerPoint for Presentations II

Presented by Bob Bragonier

As a follow-up on Rick Spillane's introductory PowerPoint presentation in March, **Bob Bragonier** will lead attendees step-by-step through a number of common tasks useful in putting together a PowerPoint audio-visual presentation for Omnilore. These tasks include: inserting a picture into a slide; inserting music into a slide (to play on one slide or on a series of slides); inserting a YouTube clip (in real time) into a slide; inserting a downloaded video clip into a slide; using sequential bullets; animating arrows; as many things as we have time for. As he goes along, he will highlight minor differences between 2003, 2007, and 2010 versions of PowerPoint. Plan to come early and bring your laptop to follow along with Bob; also, don't forget to bring along questions and concerns you have experienced during your own PowerPoint adventures!"

**OMNIOLORE PROFILE: Leslie Schettler, World Traveler**

*by Kate Nelson*

Leslie and Paul Schettler are looking for a retirement place, possibly California, maybe Arizona or even Oregon. Wherever it is, they'll have a fairly large household to move—there are the two of them and their four rescue dogs, all acquired from their work with a Golden Retriever rescue organization. Leslie thought she was done at three; then Paul brought one home “just for the night, until I can take her to the kennel.” That dog is now a happy part of the household. “That’s how it is,” she says, “once you’re bonded, it’s for life.”

Leslie’s peripatetic early life didn’t exactly prepare her for long relationships. She was born in New York, but grew up as a Navy child and spent her childhood on various bases, and her high school years in The Philippines. Some might hate the uncertainty and the constant moving, but Leslie liked it and said that the experience gave her a passion for new adventures.

After graduating from the University of Colorado, she hired on with Pan American World Airways and flew everywhere. You remember Pan Am—the “stewardesses” wore slate blue skirts and white blouses topped with perky blue pillbox hats. Leslie watched a couple of episodes of a recent TV series about Pan Am that showed the stewardesses and pilots engaged in almost constant affairs and partying. “That was pure Hollywood,” she said. “In fact, it was really hard work.” There were benefits, though. She did manage to snag the famous ‘round-the-world routes (known simply as Flights 1 and 2) with 24-hour stopovers at every exotic city the airline served (her favorite trip was to Africa, by the way). She also flew military R&R flights into Vietnam during that war.

At the same time, her husband -to-be was in the Air Force, working as a “lowly clerk,” when he inadvertently hit what could only be called a cushy and potentially life-saving opportunity. A General was looking for someone to be his squash partner and Paul, who was a very good squash player and a passable golfer to boot, was offered the job. His other choice was training for and serving as a helicopter pilot in Vietnam, one of the highest-risk assignments in the military. Paul chose well, and spent months touring Europe with the squash-loving General.



Leslie and Paul met, appropriately, on the tennis court, and have lived in their house in Lunada Bay since 1975. Their only son, Eric, moved to Mesa, Arizona to pursue his love of motorcycles and works as a mechanic there. Leslie joined Omnilore when she retired from Delta (who took over Pan Am) in 2008 and takes two or three classes every term, often serving as coordinator. She loves the Best-Sellers Book Group and really enjoyed a recent S/DG on *The Economist* magazine.

In addition to Omnilore, when she’s not walking the dogs, she’s doing Pilates at the gym, playing bridge, volunteering for the South Bay Literacy Council, coaching third-graders in reading, and serving with World Wings International, a philanthropic organization that raises money to combat breast cancer – all new adventures that keep her happily grounded.



**A Lot Is Going On in OLLI this Spring!**

*by Jim Bouchard*

*Senior Program Development Specialist  
Coordinator, Lifelong Learning, OLLI at CSUDH*



The spring OLLI lectures are well underway and attendance at each location - Carson, Torrance, and Manhattan Beach - has increased significantly since last fall. Our marketing has paid off since we have increased our membership by nearly 100 members since January 1!

In addition to the Osher Lecture Series, I would encourage you to consider taking one of the OLLI courses that you will find in this spring’s catalog. Courses in drawing, genealogy, health, bird watching, opera, digital photography, nutrition, and much more are available on campus in our modern Extended Ed classroom building. A poetry event on April 10 will also be held on campus, as will an update on “The Affordable Care Act” with Dr. Lisa Santora, Chief Medical Officer at Beach Cities Health District on April 30.

I would also urge members to register early for the annual OLLI Members Meeting on Tuesday, April 22, 10a.m. - 1 p.m. which will be held in the Extended Ed classroom building. A box lunch will be provided for those members who register for the event by April 17. The ever-popular Dr. Edd Whetmore will present “Simon, Garfunkel and The Graduate: Folk Rock Meets the Silver Screen.” As always, you can register by phone by calling our Extended Ed registration office at 310.243.3741. (For more information, see page 29 in your OLLI spring catalog, or contact the OLLI office at 310.243.3208.)

Have a great semester!

*The Next*

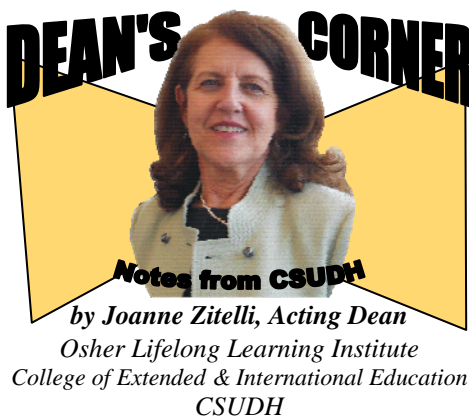
**INTRODUCING OMNIOLORE MEETING:**

**Monday, March 24th - Room 7 - 10 a.m.**

**Help Spread the Word! RSVP 310-370-9522**



## DEAN'S CORNER



We are pleased to introduce OLLI members to a new member of the campus' senior administration. Ellen Junn assumed the role of provost and vice president of academic affairs in January. The vice president of academic affairs plays a key role at the university and is responsible for strategic leadership in achieving academic objectives. College deans, including the dean of Extended & International Education, report directly to the provost.

Dr. Junn has an impressive record of accomplishments as a scholar, teacher and senior administrator in higher education. She has held a variety of key positions in administration in addition to teaching, publishing, and directing grants in her field of cognitive psychology. Her

Ph.D. is in Psychology from Princeton University. Most recently Dr. Junn served as provost at San Jose State University. With a 27-year history of service to the California State University system, she brings a depth of knowledge about policies affecting the CSU, teaching and assessment best practices, and budget and enrollment management.

Having seen Dr. Junn lead campus-wide meetings and also having met with her one-on-one, I believe we have an articulate, committed and approachable leader at the helm of academic affairs.

You can read more about Dr. Junn by following the link :

<http://www.csudhnews.com/2013/12/junn-provost/>

Also we wanted to update you on the search for the new permanent dean of the College of Extended & International Education. Finalists for the position have been announced. The University community encourages you to attend the open forums scheduled for each candidate. We will keep you posted on details.

Please visit the following webpage to view finalists' résumés <http://www4.csudh.edu/academic-affairs/campus-interviews/index>. The webpage will be updated as additional information is available.

### Mark Novak, Ph.D.

Campus Open Forum  
Tuesday, March 4, 2014  
10:00-10:45 am  
Extended Education 1213

### Chester Haskell, D.P.A.

Campus Open Forum  
Wednesday, March 19, 2014  
Time: TBD  
Location: TBD

### J. Kim McNutt, MA

Campus Open Forum  
Monday, March 24, 2014  
Time: TBD  
Location: TBD

### W. Reed Scull, Ed.D.

Campus Open Forum  
Wednesday, April 9, 2014  
Time: TBD  
Location: TBD



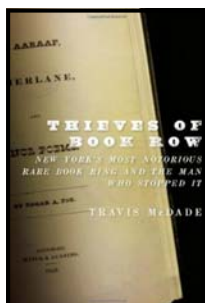
Dr. Ellen Junn

## Best-Sellers SIG Offers:

## "Second Helping" of a Good Book

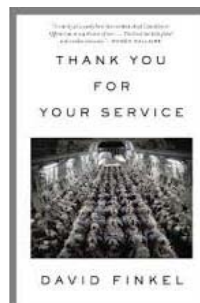
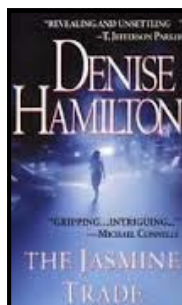
by Patricia Edie and Cindy Eggert

Participating in a Book Group allows you to enjoy books twice. . .once when you first read the book, and once when you discuss the intricacies of the plot, the characters, and the subject matter with others. Treat yourself to this "second helping" by attending our Best-Sellers Special Interest Group. Each month, on the second Monday of the month, about 20-plus members and guests meet in Room 8 of the Franklin Center from 11 a.m. to 12:30 p.m. to discuss the book chosen for the month. We alternate each month between various works of fiction and non-fiction. The subject matter is varied and the discussion always animated! So that you have plenty of time to read the chosen books, here are the upcoming selections:



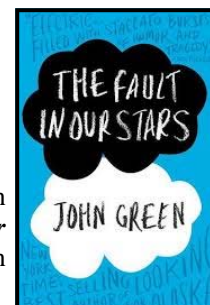
**March 10:** Non-Fiction  
*Thieves of Book Row*  
by Travis McDade

**April 14:** Fiction  
*The Jasmine Trade*  
by Denise Hamilton

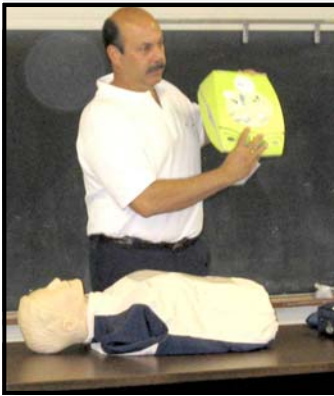


**May 12:** Non-Fiction  
*Thank You for Your Service*  
by David Finkel

**June 9:** Fiction  
*The Fault in Our Stars*  
by John Green



As with any SIG, you need not register to participate. . .just show up on the date, prepared to join in. Guests are always welcomed.



Fireman Paramedic Vince Dipane

## AED Training to Resume in April

by Gary Nofziger

**F**our years ago, Omnilore acquired an Automated External Defibrillator (AED) for possible emergency use during Omnilore classes and other meetings at the Franklin Center. The AED is a computerized medical device which can check a person's heart rhythm and recognize a rhythm that requires a shock. Then it can advise the rescuer when a shock is needed. The AED uses voice prompts, lights and text messages to tell the rescuer the steps to take. Our device, a Zoll AED Plus, is installed in Room 7 at the center.

In order to use the AED, members must be trained by a certified trainer. We want to be sure that, if that unwanted emergency comes our way, our trained members and AED will be ready to do the job right.

Because the recommended training interval for AED certification is two years, Omnilore is again offering AED/CPR training to members, both those previously trained and new trainees. There is no cost for the training. We are fortunate that our training is provided by **Captain Vince Dipane** of the Redondo Beach Fire Department (RBF), who did our training in 2010 and 2012. Captain Dipane is certified by the American Heart Association for AED/CPR instruction. He leads an emergency response unit within the RBF, which uses a Zoll AED similar to the one that we purchased.

There will be two AED/CPR training classes of 15 students each. The first class will be held on Friday, April 11, starting at 9 a.m. and concluding in mid-afternoon. The second will be held on Thursday, May 29, starting at 10 a.m. Upon successfully completing the class, the trained member will receive a two-year certification in CPR and AED operation. An e-mail notification will be distributed in March with details for registration, which will be coordinated by **Johan Smith**.

The AED device requires periodic care/maintenance and related record-keeping. Kudos to our Equipment Manager, **Hal Hart**, who has handled this task with his usual efficiency for the past two years. He is assisted by En-Pro Management Inc., a company that implements and maintains AED programs.

**Gary Nofziger** is coordinating Omnilore's training, and questions about it may be directed to him at [gnofziger@gmail.com](mailto:gnofziger@gmail.com).

The AED is still the newest and most significant addition to our other First Aid supplies, which already included First Aid kits in both classrooms as well as tools to help clean up the results of minor injuries and other incidents where body fluids are spilled.

During the acquisition of our AED in 2010, **Steve Miller** and **Bill Gargaro** provided the main efforts for Omnilore while **Jim Bouchard**, OLLI Coordinator, and **Manny Alviso**, Director of Risk Management and Employee Occupational Health and Safety at CSUDH, ensured that our overall AED Plan complies with the health and safety policies of the University.

## In Memoriam

### Gordon Reiter

**A**n early contributor to the aerospace engineering community, which continues to thrive in the South Bay, Gordon graduated from USC in 1957, just in time for the launch of Russia's Sputnik satellite, and the launch of his own distinguished career designing rockets and satellites. He earned his M.S. and Ph.D. degrees from Caltech, and worked at both Hughes Space & Communications Group (now Boeing) and TRW (now Northrop Grumman).



With both of his parents professors at the University of New Mexico (his father in archeology, his mother in journalism), his mother spawned his lifelong interest in classical literature, which led to Gordon's co-founding (with Dick Croft) Omnilore's perennially popular "Shakespeare" S/DG in 1998.

### Robert Svensrud

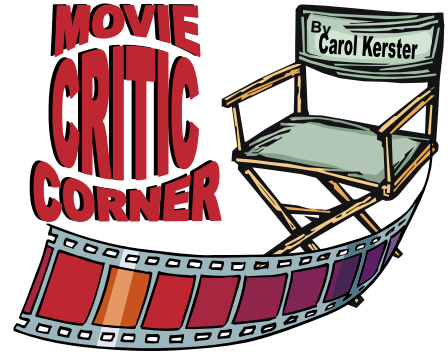
**B**orn on Memorial Day in 1937, Bob grew up in Pasadena believing that his birthday was the reason he never had school that day! After high school, he "left home" on a series of adventures supported by various jobs in northern California, Colorado, and finally Florida, where he spent two years in college before returning home to finish his degree in Accounting at USC.

In 1963, Bob's love of learning led him to an evening math class at UCLA, where he met his future wife, Carmen; the

couple joined Omnilore together in 2010. Continuing his wide range of interests during his working life (e.g., sky-diving and bridge,) Bob enjoyed a variety of Omnilore activities, from science to history, including the Best-Sellers Special Interest Group.



On the day I saw *The Monuments Men*, there was an article in the Los Angeles Times about Simon Goodman, son of Holocaust survivors and grandson of Holocaust victims. Goodman's objectives are similar to those of the heroes of the movie: the recovery of the priceless art works stolen by the Nazis before and during WWII. Although the movie takes place at the end of the war, the article provided a very current context to these horrific crimes against culture committed by Nazis throughout Europe. The specific pieces sought by Goodman belonged to his grandparents, and while his father had found many of their paintings, statues, gold and silver serving pieces, etc., not all have been returned to the family. Actual restoration to original owners (Goodman's goal) is up to the country in which the art is found, and seems to involve an abundance of bureaucratic meddling, legal tangles, and pay-offs. That might constitute another story.



The point of the movie, produced, co-written, and starring George Clooney, is based on the true story of the unit of art specialists sent by the U.S. government to recover priceless treasures of Western art from being destroyed by the Nazis, who labeled it "degenerate." Return to original owners was not their primary goal. Their goal was to find the pieces, and bring them to safety. The search took them into private homes, churches, and coal mines, in France, Holland, Belgium and Germany. They encountered and exchanged gunfire with German troops, and barely avoided a fight with a Russian outfit on a similar, but more destructive mission. The action of the film was not what could be called "seamless" but it did provide moments of high tension, genuine emotion, and humor. The cast of first-rate actors made it all worthwhile, even if the script did tax credulity. How, for example, could a group of out-of-shape academics, become so efficient at military strategy? Along with Clooney, the cast includes Matt Damon, Bill Murray, John Goodman, Jean Dujardin, Bob Balaban, Hugh Bonneville (Lord Grantham in *Downton Abbey*), and Cate Blanchett, who does a terrific transition from dowdy museum record-keeper to sexy seductress.



## THE EQUIPMENT BOX

### New Windows Laptops

by Hal Hart, Omnilore Equipment Manager ([Hal.Hart@ACM.ORG](mailto:Hal.Hart@ACM.ORG))

In January, Omnilore purchased two new Windows laptops (PC's) due to failure of the display on one of the laptops we purchased in 2011.

The new laptops are larger 17-inch Dells running Windows 7. They are stored in new **Red/Black/Gray** carrying cases so they can be distinguished from the older PC's in black or gray cases which are now available as backups in each classroom (*in addition to the Mac in Room 7*).

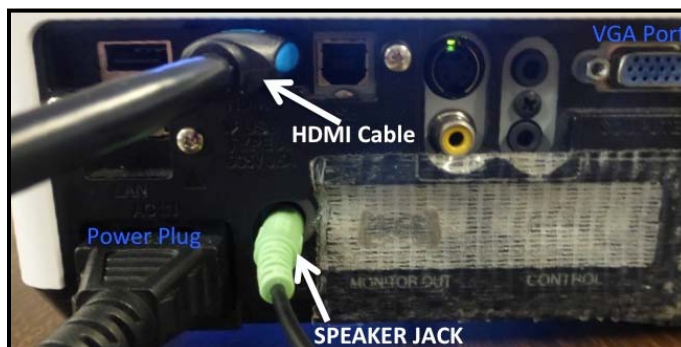
There were two *surprises*, requiring slightly different equipment-setup actions, that we did not realize when we selected this laptop model:

1. The new laptops cable to the projectors with an **HDMI cable**, not the 15-pin VGA cable that has been the laptop standard since the 1990's. (*They say HDMI is the future, so ...* )

☞ Fortunately, the new projectors we bought in 2012 have HDMI input ports alongside all the other cable connection ports we're used to. (*See graphic of backside of projector for location of projector's HDMI port.*) The new laptop's HDMI port is on the left side of the laptop when facing the display.

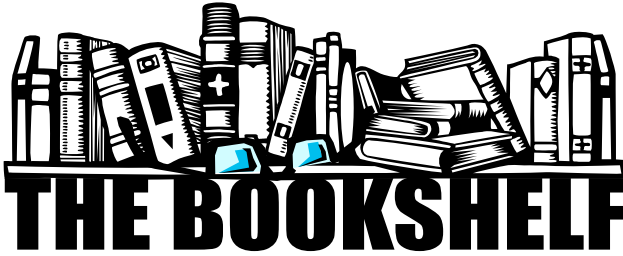
☞ 15-foot HDMI cables are stored in the front of both of the new red/black/gray laptop carrying cases. Be sure to return the HDMI cable there, as the labels on the cables say.

☞ Be warned that the HDMI cables are thicker than VGA and do not easily uncoil completely to lie flat on the floor. Take caution with setup and avoid or minimize traffic near the cables to avoid tripping and projector-smashing hazards.



2. If you need sound, for example playing a YouTube video from the Internet, the new laptops **do not connect directly to speakers**, but instead the HDMI cable carries audio as well as video. The projectors have built-in speakers, and if they're not loud enough, there is a standard speaker port on the back of the projectors to plug in the jacks for any speakers. (*See graphic for location of projector's speaker port.*)

As always, please report any issue with our laptops to Laptop Administrator **Rick Spillane** or myself. Or, just email [Equipment@Omnilore.org](mailto:Equipment@Omnilore.org) to reach us with any equipment issue.



**W**hen *The Emperor Was Divine*, by **Julie Otsuka** is an historical fiction account of the internment of Japanese Americans and Japanese citizens during WWII. A powerfully written account of a difficult period in American history. Much food for thought and discussion. The novel has received rave reviews and is in use in various communities as a teaching tool.

*Churchill's Hour*, by **Michael Dobbs**. Well paired with the novel above. This is an historical fiction account of Churchill's struggle to get Roosevelt and the U.S. to enter the war and help defeat the Nazis. This novel makes the period come alive and puts the worldwide struggle in context and balance.

*Tinker Bell – An Evolution*, by **Mindy Johnson**: A lavishly illustrated book of the progression of the idea of Tinker Bell at Walt Disney Studios from the 1930's to the animated movie of 1953, which then went on to become one of the virtual symbols of the Disney company. More drawings and pictures than text!

This book shows the early playful

groundwork which was part of the foundation of the Disney empire of today! (FY revenue in 2012 of \$5.7 Billion.)

**Malcolm Gladwell's** newest book, *David and Goliath: Underdogs,*

*Misfits and the Art of Battling Giants*, is engaging from beginning to end, turning topsy-turvy some of our surest assumptions.

Goliath, the giant, well-armed warrior, should have won against the shepherd boy David! Gladwell uses this iconic story as the starting point of how ideas and actions that are unexpected, non-traditional and counter-intuitive can overcome obstacles and disadvantages. For example, Gladwell explores the reactions of survivors of the London Blitz and the real reasons why so many were unfazed by the ongoing bombing raids.

In another chapter he examines the dynamics of optimal class size and introduces a recurring concept of the inverted U-curve, which is that strategies that work really well at first stop working past a certain point. He further explores California's Three Strikes law, "the Troubles" in Northern Ireland, the personal traits of innovative medical scientists, murder and forgiveness or revenge, and how an underdog girls' basketball team became state champions. There are

stories of people of courage and persistence, people who overcome difficulties and use them to positive advantage.

Throughout the book Gladwell supports his observations and theories by citing research and including a few charts and graphs. This is highly recommended non-fiction reading.

**"Oh, what a tangled web we weave  
When first we practice to deceive."**

This very well describes the story that **M. L. Stedman** has written in *The Light Between the Oceans*.

The Lighthouse Keeper and his wife are the only occupants of a small island in Australia where their responsibility is to keep the light going to guide ships at sea. They live a life of love and harmony with nature, albeit somewhat lonely, until an event occurs that forces them to make a difficult decision. The rest of the story tells the result of this decision and its effect upon them and others.

*Book suggestions from Omniloreans make this column work. Thanks to Dan Stern, Margery Norris, Chuck Herring and Edith Garvey for contributing to this month's list. Please send your titles, with author's name and a brief description, to Johan (johansmith@ca.rr.com). Please put "Omnilore Books" as the subject of your email. We look forward to hearing from you.*

**OMNIOLORE Spring Forum Luncheon Reservation Form**

**WHEN:** *Wednesday*, April 30th, 2014—11:30 a.m.

**WHERE:** **Los Verdes Country Club**  
7000 W. Los Verdes Drive  
Rancho Palos Verdes

*Reservations must  
be received by April 20th*

Please make \_\_\_\_\_ reservations for the **Omnilore** Spring Forum Luncheon at **\$22.00** each:

Name(s): \_\_\_\_\_  
(Please Print)

\_\_\_\_\_  
(Please Print)

Phone #: \_\_\_\_\_

Enclosed is a check for:  **\$22.00 each**

I want a vegetarian plate.

**Total number of meals:**

Please make checks out to **CSUDH**, and put in the Forum Committee's box in Room 7 or send to:

Registrar, JoAnna Kerrigan  
13 Coach Road  
Rancho Palos Verdes, CA 90275-5202

- March**
- 9 **Daylight Savings Time Begins**
  - 10 Best Sellers Book Group—11 a.m.-12.30 p.m., Room 8
  - 13 Board of Directors Meeting—12 Noon-2 p.m., Room 7
  - 17 **St. Patrick's Day**
  - 20 **First Day of Spring**
  - 21 Hiking Group—10 a.m.-12 Noon
  - 24 Introducing Omnilore Meeting—10 a.m.-12 Noon, Room 7
  - 27 Computer Talk—12 Noon-1 p.m., Room 7  
*Use of PowerPoint for Presentations*  
 —Rick Spillane (see article page 2)
- April**
- 1 **April Fool's Day**
  - 10 Board of Directors Meeting—12 Noon-2 p.m., Room 7
  - 14 **Passover**
  - 14 Best Sellers Book Group—11 a.m.-12.30 p.m., Room 8
  - 15 Input Deadline for May-June 2014 Newsletter
  - 18 Hiking Group—10 a.m.-12 Noon
  - 20 **Easter Sunday**
  - 22 **Earth Day**
  - 24 Computer Talk—12 Noon-1 p.m., Room 7  
*Use of PowerPoint for Presentations II*  
 —Bob Bragonier (see article page 2)
  - 30 Spring Forum, 11:30 a.m., Los Verdes Country Club

OMNILORE  
CALENDAR  
2014

**HAPPY  
St. Patrick's  
Day!**



**2014 Forums**  
 Winter—January 30th  
 Spring—April 30th  
 Summer—July 31st  
 Annual Mtg.—October 31st

**IMPORTANT:**  
**Calendar changes and additions  
 are scheduled with Lynn Taber**  
**(310) 831-4768—johnlyntaber@gmail.com**

**About the Forum Luncheon . . .** *by Lori Geittmann, Forum Chair*



**T**hank you who have come to the Forum Luncheons and supported our program. It takes a lot of effort by the committee to put on these luncheons.

First we have to find a speaker. Experience has taught us that this is a problem area. Often people tell us they heard a presentation in their class that should be a Forum program. Over the years we have learned this is not a good idea as once we open the door to one, then, in fairness, we must open to others. We could wind up with speakers who are only giving a S/DG presentation. This was not the vision Diana Cutler had when she started the Forum. It was to bring in good speakers from outside.

Over the years I have suggested a special interest group that would feature those great presentations. So far no one has volunteered to do it.

Another rule we have is to not repeat a speaker for a period of at least two years. This gives our speakers a chance to refresh their material and not to give a repeat performance too soon.

Finally we seek to find a speaker who is intelligent and provides us with information that we would not normally have access to. We want that person to give a talk on a topic that will not send us away with doom and gloom.

And about reservations, we need your check 10 days in advance to order your meal. Los Verdes requires the exact number at that time and once we give them that number, we must pay for that many meals. That is why I cannot return your check if you cancel less than 10 days prior to the luncheon. We have already ordered your meal and must pay for it.

We are always happy to hear your comments and suggestions. We hope you feel that it is your Forum and that you enjoy the socializing, the food and the speaker.