



OMNIOLORE NEWS

Volume 17 Issue 1

www.omnilore.org

January 2008

OMNIOLORE

California State University
Dominguez Hills

OMNIOLORE NEWS

A publication of OMNIOLORE, a Learning in Retirement Organization affiliated with The Division of Extended & International Education of California State University Dominguez Hills

BOARD OF DIRECTORS

Elected Officers

President	Rick Spillane
VP - Academics	Merle Culbert
VP - Administration	Carol Simone
Treasurer	Tom Vincent
Recording Secretary	Janet Brown
Past President	Dick Johnson
Member-at-Large	Kit Bell
Member-at-Large	Ruth Hart
Member-at-Large	Janice Plank

Standing Committee Chairs

Membership	Howard Korman
Forum	Diana Cutler
Communications	Open
Head Coordinator	Laura Guneau
Curriculum	Dick Johnson

Appointees

New Member Liaison	Edith Garvey
Registrar	Roy Schubert
Archivist	Bob Saunders
Laptop Admin.	Tom Vincent
Office Manager	Carol Johnson
Supplies	JoAnna Kerrigan
Webmaster	Myron Pullen

Omnilore News is published six times annually. We welcome short feature articles and news stories. Please contact the editor with your contributions.

Co-Editors	Diana Cutler JoAnna Kerrigan
Staff Member	Carol Kerster

Green Architecture!

by Carol Kerster

Have you ever wondered what major component of education is missing from *Omnilore*? No, I don't mean recess, or lunch, or being sent to the principal's office. I mean TESTS! So, to correct that deficiency, and to prepare for the January Forum Luncheon, here is, a very short quiz.

1. What percentage of water that falls to the earth in the form of rain, actually recharges our drinking water supply? A. 10% B. 75% C. 3%
2. In approximate dollar amounts, how much drinking water does LA import each year from outside the state?
3. The scraps of what material are hauled away and buried in landfill during construction, then replaced on the site with new, imported supplies of it at the end of the project?



Peter K. Phinney
VP, Architecture
Bryant Palmer Soto, Inc.

If you don't know the answers to these questions, you must attend the first Forum of 2008, where we will have the great pleasure of hearing **Peter K. Phinney**, AIA, Vice President, Architecture, with Bryant Palmer Soto, Inc. Peter will not only answer these questions, he will speak of related issues, such as embodied energy, climate change, and carbon footprints. Also, his presentation will focus on saving natural resources, taking responsibility for maintaining physical comfort, and teaching the next generation something about environmental stewardship.

Though a graduate of Harvard University's Graduate School of Design, and designer of more than 70 retail interiors and national prototype stores throughout the United States, as well as renovations to schools, museums and galleries, public parks, community streetscapes and other projects, Peter's expertise extends beyond architecture. He is well versed in the design of way-finding graphics, didactic signage, and the psychology of color, and he is a specialist in architectural history and historic preservation, all of which have informed his work. With this background, it is not surprising that Peter is a LEED Accredited Designer (US GREEN Building Council), past president of the Long Beach South Bay Chapter of the American Institute of Architects, teacher of architecture at Cerritos College, member of the Advisory Board of the Palos Verdes Art Center, and vice chair of the Marina del Rey Design Control Board of the County of Los Angeles.

We are indeed fortunate to have this multi-talented man as the first speaker of the New Year, so do plan to attend. Happily, the luncheon on January 23rd, is at the friendly Los Verdes Country Club, and the registration form is on page 5 of this newsletter. Oh, the answers to the above quiz are above the registration form

DON'T MISS — IN THIS ISSUE

◆ President's Message	Page 2
◆ Computer Talks	Page 3
◆ Welcome New Members	Page 4
◆ CSUDH Spring 08 Lecture Schedule	Page 4
◆ The Bookshelf	Page 5



MESSAGE FROM THE PRESIDENT

by Rick Spillane

Well, 2007 certainly sped by. I am writing this before the New Year so I sincerely wish every one of you a happy and healthy New Year.

I want to welcome all of our members, and especially new ones, to a great year of fun and intellectual challenges. Studies show that minds, like bodies, need exercise. While there are many beaches and exercise facilities in the South Bay, only Omnilore provides special exercises for the adult mind.

Our new trimester courses are slowly waking our minds up after festive greetings of the New Year. (Did you actually stay up late enough to greet it?) With a new start, think about the basic elements that have made Omnilore a success.

The first is the great group of members who volunteer to ensure that all the diverse needs of this organization are more than met. They make every endeavor, from the Membership Committee, to the Curriculum Committee, to the Forum Committee, to Board meetings, fun while breaking the work load into manageable chunks.

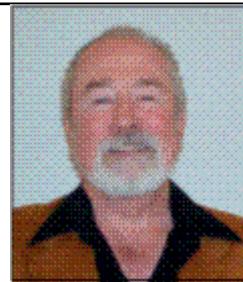
Make one of your New Year's resolutions volunteering to help on one of our committees. There is a strong need for volunteers to help with the

newsletter. This is a great chance to help Omnilore continue as the organization we all know and love.

The second element is great classes which come out of great discussions. To see that great discussions happen, let everyone know two weeks before your presentation what the presentation will be about, some references (if possible), and some points for them to mull over before class. This leads to better discussions and Omniloreans certainly like discussions. With a little preparation time, the discussions can be more informed. Be sure to work with the coordinators as they will, in their polite way, ensure that both the soft spoken and the outspoken are allowed to have their say. Remember that listening is one of the great ways of learning and Omnilore members are always learning.

Our next Forum will be on 23 January 2008; the talks are always interesting, informative, and often controversial. Read about it in the newsletter and be sure to make reservations. The food and speakers were excellent last year and **Diana Cutler** and the Forum Committee strive to be even better this year.

If you want to see how Omnilore works, or if you wish to bring an issue to the attention of the Omnilore Board, attend a Board meeting. All members are invited. The Omnilore Board meets at noon on the second Thursday of every month at the Franklin Center. As with all Omnilore schedules, you can check the Omnilore web site for the Board's meeting date or to resolve other scheduling questions. The minutes of each Board meeting are posted on the Omnilore web site. A "must read" if I ever saw one! If you are not a regular visitor to the web site, you are missing one of the best Learning-in-Retirement web sites and a great source of information on Omnilore.



Myron Pullen, our Webmaster, and the Computer Working Group continue to improve the Omnilore web site. Your coordinator can now put all the class information - schedules, questions and presentations - on the site for easy access. Everything you need to know about Omnilore such as room and class schedules are available. There are also many links to sites that might be helpful in doing research for your presentations. Have fun!



Jim Bouchard

**Global Warming:
Energy, Economics,
and the Environment**

by **Jim Bouchard**

Director, Lifelong Learning Institute
College of Extended & International Education
CSUDH



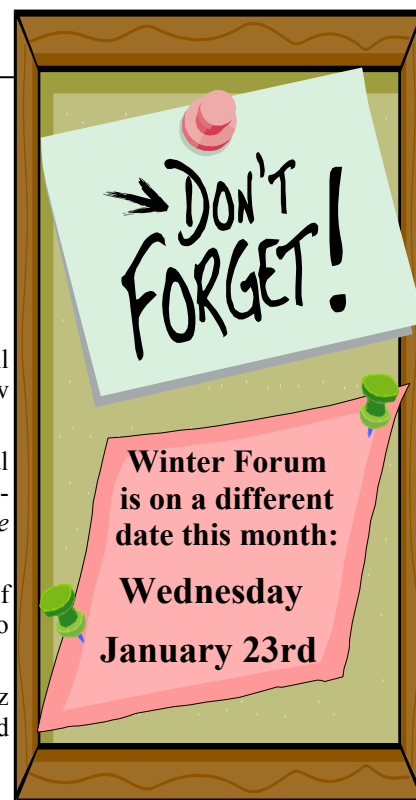
Crazy weather lately! I'm told that the fall foliage in New England didn't start until well into November. And as I write this, much of the country has been walloped by two snow storms.

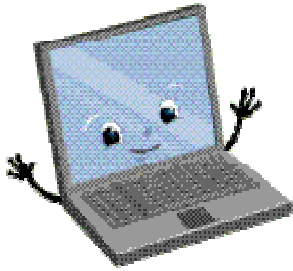
Is it global warming? What effect will global warming have on our future? Can global warming be prevented? These are some of the questions CSUDH professors will be addressing in our spring 2008 lecture series, *Global Warming: Energy, Economics, and the Environment* (see lecture schedule on page 4).

Join us as we hear about such relevant topics as the history of energy, the current state of Antarctica, biodiversity, and - - gulp - - mass extinctions! On the brighter side, we also will learn how we might possibly prevent dire consequences of global warming.

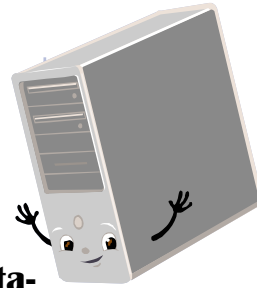
We will once again have a variety of professors from Cal State University Dominguez Hills including an earth scientist, political scientist, a biologist, and an anthropologist. And don't miss the incredible slides of Antarctica from CSUDH visiting scholar William Fox.

Till we meet in 2008!





Computer Talks



Organizing PowerPoint Presentations

by Carol Johnson & Mary Barling

Building an outline for a PowerPoint slide show is an important step in preparing a presentation. MS Word has two little-known features for this purpose: One is "outline view" for creating heading 1 and heading 2 lines. The other is "Send to Microsoft PowerPoint," where each heading 1 starts a new slide and heading 2 lines become bullets on that slide.

If the slides are modified in PowerPoint the outline can be sent back to Word for review, modification and printing as a handout. The outline view can also be printed from PowerPoint.

Mary Barling will illustrate these outlining features at the noon-hour Computer Talks on **Thursday, January 24th**, 12 to 1 p.m., Room 7. If you have a laptop with Word and PowerPoint (2000 or later), why not bring it and follow along? Be prepared to use battery power.



Exploring the Web for Omnilore Presentations

by Patricia Edie

We know the internet is full of an ever-growing glut of information. But facing the Internet Browser can be like walking into Costco for the first time. Where do you go? How do you get there? What do you do with the information? On **Thursday, February 28, 2008**, from 12 to 1 pm Patricia Edie will present some ideas for "Exploring the Web for Omnilore Presentations."

A New Year and New Links!

Your *Omnilore* web page (www.omnilore.org) is starting off the new year with several new links to explore. These links can enhance your research and presentations, satisfy (well, maybe) your curiosity, and cure your boredom.

In our Books and Other Publications section, you can now click on the web address for "*The Internet Encyclopedia of Philosophy*"; this site is aimed at the general readership. If it doesn't give you enough, click on the "*Stanford Encyclopedia of Philosophy*," which offers 1000 essays by professionals in the field.

In the General Interest category, the varied possibilities include "*Archaeology*," a link to archaeological sites and recent magazines and journal articles on the topic. The "*Carolina Classical Connection*" offers extensive links that are organized by musical eras. For fun, consider "*Geography Game*;" it's just the ticket for those of us who can't keep the African and Middle Eastern countries straight. "*KurzweilAI.net*" is a site for anyone who wants to keep track of trends in various technologies, including medical advances. This site features the big thoughts of today's big thinkers.

In our History section, take a look at the "*Timeline of Art History*" from the Metropolitan Museum of Art.

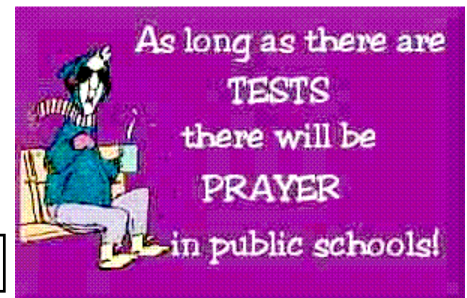
Finally, under Research Tools you will find "*Ethnologue Languages of the World*," offering information on the world's 6,912 known living languages. Also in this section is "*Supranational Websites*," a link to websites of governments worldwide including some in exile. All this and more can be found by going to our *Omnilore* home page, click on "More Info" in the left hand column, then click on "Links." As easy as that! Enrich your life by taking a look.



Travel Notes

The *Omnilore* Travel Committee has been working on future travel opportunities. The April trip to France is "all systems go" with an interesting S/DG underway. For future trips in 2008-2009, the committee members are researching the possibilities. **Eastward Ho** to the maritime provinces of Canada, with the possible inclusion of Quebec is under consideration for Fall-2008. Other exciting possibilities under serious consideration are:

Cool Cruising - a summer cruise and tour in Scandinavia; **A Capitol Conflict** - a close look at the two Civil War capitol of Richmond and Washington, DC with important battlefields included; **Take a Peak at Colorado** - a week-long look at Denver, Boulder, Colorado Springs, and points in between. If you would like to give input on *Omnilore* travel, contact any of the committee members - **John & Lynn Taber, Marilyn Landau, Emil Raulin, Carol & Tony Lopilato, or Mary Oran.**



Omniole Welcomes New Members

by Howard Korman

Looking forward to the spring trimester, the Membership Committee held two "Introducing Omniole" meetings this fall. Twenty-one people attended; of those, 13 enrolled and several others said they may enroll before the start of the new trimester. Many *Omniole* members helped by encouraging friends to get involved in *Omniole* and their assistance is much appreciated.

The Membership Committee would also like to thank the **Daily Breeze**, the **Easy Reader**, and the **Beach Reporter** for their publicity that inspired several people to attend. We post flyers in libraries announcing these meetings and if anyone has any further suggestions for publicizing future meetings, feel free to contact me.

The next two "Introducing Omniole" meetings are tentatively scheduled for March 26, 2008 and April 10, 2008.

Let's welcome all our new members to the classes they have enthusiastically selected.



WELCOME!



Harriett Apsel
Torrance

Dian Ashley
San Pedro

Louise Barr
San Pedro

Al Blinder
Torrance



Arlene Block
Rancho Palos Verdes

Sharon Bohner
Manhattan Beach

Jackie Booth
Torrance

Elizabeth Brown
Manhattan Beach

Erika Byczkowski
Torrance

Dennis Eggert
Hermosa Beach

Zelda Green
Rancho Palos Verdes

Gary Hart
Torrance

Judi Jones
San Pedro

Dale Korman
Torrance

Ted Kotzin
Torrance

Cathy Kwan
Rancho Palos Verdes

Lorraine Marcone
Redondo Beach

Karen Marcus
Rancho Palos Verdes

Mary Palmer
Palos Verdes Estates

Kate Pecarovich
Redondo Beach

Stan & Carol Pleatman
Redondo Beach

Shelley Pogorelsky
Rolling Hills Estates

Linda Rodrick
Palos Verdes Peninsula

Rosalee Saikley
Manhattan Beach

Nancy Siems
Torrance

Jane Smolens
Rolling Hills Estates

Iana Spitz
Los Angeles

Fred Virrazzi
Torrance

Gail Windham
Rolling Hills Estates

Larry Young
Redondo Beach

Teresa Yu
Rancho Palos Verdes



Seasons Greetings from Your Curriculum Chairman

by Dick Johnson

You may get the New Year off to a great start by submitting (by January 9th) a proposed course for the summer trimester. If you can't make that January 9th date, submit a proposal for the fall trimester. You can review the write-ups for the courses offered in the past and write your own paragraph with title and common reading suggestions. E-mail it to **Johan Smith** at johan-smith@ca.rr.com or mail it to her at 8726 Sepulveda Blvd. #18, Los Angeles, CA 90045-5802.

Please don't just suggest a course on some topic. Go to the library or read book reviews to get sensible common reading material and write up the course with suggested topics for presentation, etc. The Committee tries to give preference to member-submitted courses.

Spring 08 CSUDH Lecture Series

Global Warming: Energy, Economics, and the Environment

Demands for energy in the 20th century have impacted utilization of natural resources, caused environmental changes, and created complex economic situations. Lectures in this series about environmental studies will look at specific issues and case studies. Scientific, social, and economic perspectives on such topics as biodiversity and sustainability, water management, petroleum production, policy issues, and climate will be presented. Lectures will be held at the Redondo Beach Main Library at 303 North Pacific Coast Hwy.

Wednesday, February 6, 10:30am to 12:30pm
Evidence and Implications of Global Warming
John Keyantash, Assistant Professor
Earth Sciences, Geology & Geography Department

Wednesday, February 20, 10:30am to 12:30pm
Mass Extinctions
Dr. Cathy Jacobs, Lecturer
Interdisciplinary Studies PACE

Wednesday, March 5, 10:30am to 12:30pm
A Theory of Everything: How to Solve Global Warming
Dr. Annie Wilson, Lecturer
Political Science and Economics

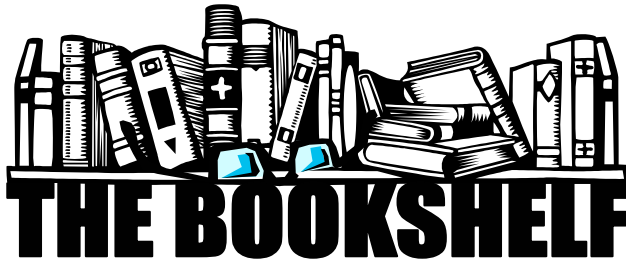


Wednesday, March 19, 10:30am to 12:30pm
*(Note: this lecture **only** will be held on campus in the EE auditorium)*

The Effects of Global Warming on Antarctica
William L. Fox, Visiting Distinguished Scholar

Wednesday, April 2, 10:30am to 12:30 pm
The Biodiversity of Chiapas
Dr. Janine Gasco, Associate Professor
Department of Anthropology

Wednesday, April 16, 10:30am to 12:30 pm
A History of Energy in the Agricultural, Industrial, & Information Ages, and Future Policy Alternatives
Dr. Linda Groff, Emeritus Faculty
Political Science and Economics



by Mary Oran

Welcome to a new year of reading. When we are gathered during our breaks and at our Forums, I frequently hear people talking about books. It would be wonderful if those discussions would result in some recommendations coming our way. This would give us an opportunity to offer a diversity of reading. Please consider making a resolution this year to send some ideas our way!

The nonfiction choices this month feature two remarkable women and one remarkable language. *Grayson* by **Lynne Cox** is a true-life account of an extraordinary ocean adventure. When the author was 17, she trained for marathon swimming off the coast of Seal Beach. A lost baby whale (she named him Grayson) became her underwater companion. This is the story of her determination to reunite the baby with his mom. It is a joyful little book that offers wonderful descriptions of the ocean as well.

Georgina Howell's Gertrude Bell: Queen of the Desert, Shaper of Nations makes use of letters, diaries and Bell's publications to tell the story of one of Britain's most famous travelers. Bell's life covered 1868 to 1926, and in that life

she was known as an explorer, travel writer, translator of Sufi verse, scholar and spy. What she ventured to do is truly amazing. This biography may be long, but it is a gripping read. (Note: It will be coming out in paperback in a few months).

If you love our language, with all its peculiarities, you will enjoy *Mother Tongue*. Author **Bill Bryson** provides insight into both British and American English, showing how the language evolved with uncertain grammar, spelling and pronunciation. The presentation of the changes keeps the reader turning each page, wondering what the next revelation will be. Bryson is always an entertaining writer and prolific as well. You might want to check out some of his other works too.

Our fiction recommendation is a delightful little book called *An Uncommon Reader* by **Alan Bennett**. It tells the story of Queen Elizabeth II's discovery of a book mobile outside her castle (her corgis were barking at it). This marks the beginning of the Queen's reading "binge." Her passion for reading begins to change all sorts of courtly things, much to the court's distress. The literary references and character portrayals are clever and fun. This book will leave you smiling!

The other two recommendations are memoirs rather than fiction; both have the same essential theme - childhood

survival in extreme circumstances. *The Glass Castle* by **Jeannette Wells** is the story of Wells and her siblings, children of off-the-wall parents, and how they have to fend for themselves. The parents are oblivious to the empty refrigerator, the leaking roof, the tattered clothes. The children rescue each other and break out of that existence. *The Liar's Club* by **Mary Karr** tells of a child growing up in a Texas refinery town. The father is a drunk, and the title refers to his gatherings with his cronies at the local bar where he would spin his lies. Though some of the scenes are appalling, the story is told with humor, and one critic described this book as "howlingly tragic and howlingly funny." Both of these memoirs leave the reader with an admiration for the children and an appreciation for the spirit that allows them to cope and survive.

Again, please tell us about books that *Omniole* members would enjoy. Also, you can check out all of the "Bookshelf" recommendations on our website; there are approximately 125 books on the list - something for everyone!

(Our thanks go to Patricia Edie, Edith Garvey and Chuck Herring for contributing to our list. Please send your titles, with authors' name and a very brief description, to msoran@sbcglobal.net. Please put "Omniole Books" as the subject. We look forward to hearing from you.)

(The answers from the lead article:
1. 3%; 2. a billion dollars worth of water; 3. gypsum)

OMNIOLORE Forum Luncheon Reservation Form

WHEN: **Wednesday, January 23rd, 2008 - 11:30 a.m.**

WHERE: **Los Verdes Country Club**
7000 W. Los Verdes Drive
Rancho Palos Verdes

Reservations are required by January 18th, please!

Please make _____ reservations for the **Omniole Annual Luncheon** at **\$17.50** each:

Name(s): _____ Phone #: _____
(Please Print)

_____ Phone #: _____
(Please Print)

Enclosed is a check for: \$17.50 Other

Please make checks out to **CSUDH**, and put in the Forum Committee's box or send to:

Forum Committee, c/o Diana Cutler
10 Middleridge Lane S.
Rolling Hills, CA 90274

- | | |
|-----------------|--|
| January | <p>1 New Year's Day
 2 Spring Trimester Begins
 8 Membership Committee - 12 Noon - 1 p.m. - Room 8
 10 Board of Directors Meeting - 12 Noon - 2 p.m. - Room 7
 18 Hiking Group - 10 a.m.
 21 Martin Luther King, Jr. Day
 23 Winter Forum (see article page 1)
 24 Computer Talks - 12 Noon - 1 p.m. - Room 7
 <i>Organizing PowerPoint Presentations</i>
 - Mary Barling (see article page 3)
 30 Website Working Group - 11:30 a.m.—1 p.m.- Room 8</p> |
| February | <p>12 Lincoln's Birthday
 12 Membership Committee - 12 Noon - 1 p.m. - Room 8
 14 St. Valentine's Day
 14 Board of Directors Meeting - 12 Noon - 2 p.m. - Room 7.
 15 Input Deadline for March/April Newsletter
 15 Hiking Group - 10 a.m.
 18 Presidents Day
 22 Washington's Birthday
 28 Computer Talks - 12 Noon - 1 p.m. - Room 7
 <i>Exploring the Web for Omnilore Presentations</i>
 - Patricia Edie (see article page 3)
 29 Leap Day</p> |

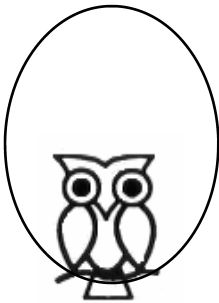
OMNIOLORE
CALENDAR
2008

HAPPY
NEW
YEAR



IMPORTANT:

Calendar changes and additions are scheduled with
Pat Stevens - (310) 548-3253 - p.t.stevens@cox.net



Omnilore, CSUDH
 Division of Extended & International Education
 PMB 236
 P.O. Box 7000
 Redondo Beach, Ca. 90277-8710